

WATCHDOG PRO

4G/ WIFI Live Streaming Body Worn Camera Solution



WatchDog Pro is the high-end 4G LTE H.264 Full HD Body Worn Camera solution tailor made for law enforcement and high security applications. With IP67 waterproof, shock and vibration resistant along with dust proof design, the outstanding performance delivers clear and sharp images in extremely low light conditions.

WatchDog Pro features 120° angle view, 3.5" HD display, 1080P video recording, Dual SIM, 16MP photo resolution, 10m IR, external 1080P camera support, real-time video streaming, 2-way audio, SOS alert and laser indicator.

WatchDog Pro uses a powerful software solution which consists of a WatchDog Pro Client and a Platform Server software for live streaming. Optional WatchDog Pro DEMS is available for complete video management capabilities once the data is downloaded from the BWC.

Security

| | |
|-------------------------------------|--|
| WatchDog Pro Live Communication | BWC is registered with the Platform Server to establish a command channel |
| BWC registration on Platform Server | Registration process adopts CHAP Authentication. The Command channel adopts DES Encryption |
| Audio/ Video | Transmitted through the data channel using a private protocol |
| Additional Security Requirements | For higher security requirements, a confidential gateway solution can be implemented. |

KEY FEATURES

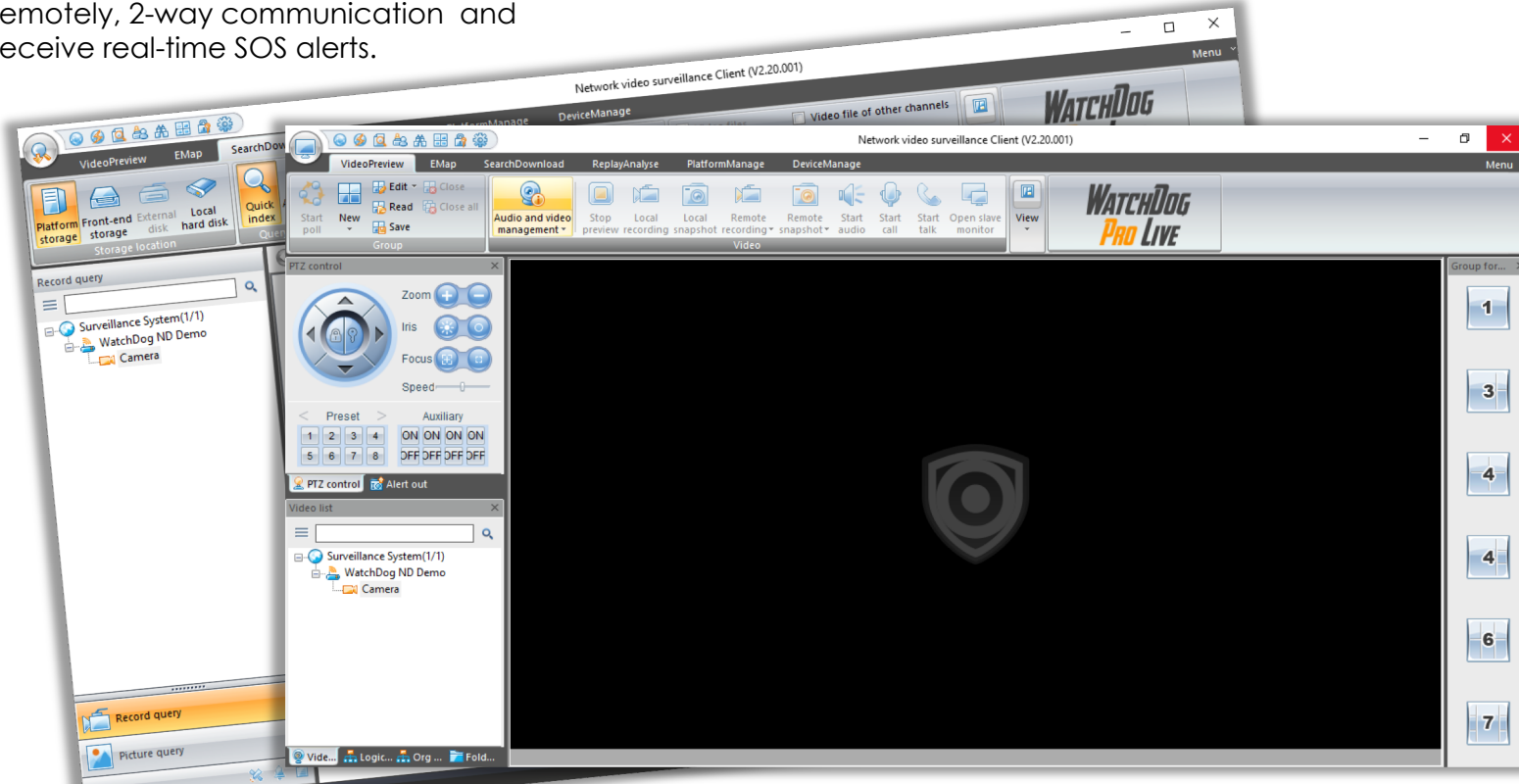
| |
|---|
| 4G LTE Body Worn Camera |
| 2GB RAM + 64GB Memory |
| Live H.264 video streaming |
| 1080P FHD video recording |
| Dual 4G SIM support (Manual switching) |
| Triple camera support |
| Triple Mic with noise reduction, 3W speaker |
| External 720P/ 1080P camera support |
| FOV: 120° (diagonal), 108° (horizontal) |
| IP67 waterproof and dust-proof |
| 3.5" IPS touch-screen (Corning Gorilla III), supports operation with gloves |
| 16MP resolution photo capture |
| 10 meter IR night vision |
| GPS, WIFI (2.4G/ 5G), Bluetooth, NFS built-in |
| Support 4G/ 5G Network |
| Shock and corrosion protection, 2M drop test |
| One-key SOS, 2-way audio, Group call |
| Data safety with encryption |
| Watermark function |
| WatchDog CMS Client and server management platform |
| Fast charging, max 3 hrs. PE+ Protocol supported |

Live Streaming Software Components/ Features

WatchDog Pro is a powerful live streaming solution for small to large applications.

Consisting of the [WatchDog Pro Viewer](#) and the [Platform Sever](#), the customer has the ability to host their own local server, or a Cloud-based server.

The Viewer software allows the administrator to control the BWC remotely, 2-way communication and receive real-time SOS alerts.



Private client interface control

Data storage and query download

Private client interface control

Client-server architecture

E-Map, geo-fence, event management

Network and database management

Remote record, playback analysis

Report statistics

Platform Server

- Communication configuration
- Storage configuration
- Server IP configuration
- Organization setup

WatchDog Pro Viewer

- Live Streaming of single or multi-cameras
- 2 way audio/ video communication
- Audio listening
- Stealth video viewing
- Group call
- Remote activation of audio/ video recording with user selectable storage options
 - Platform Server storage location
 - Local PC
 - WatchDog Pro SD card
- Electronic Map –
 - Live GPS location data
 - Multi camera video preview
- Search Window
 - Search for audio/ video on BWC SD card, Platform Server location or local PC
 - Download audio/ video footage from selected storage location
 - Event handling
 - Export file data (Excel)
 - Advanced search by Date/ time, Record Reason or BWC
 - View saved footage
 - Delete footage
- Replay/ Analyze - replay of audio/ video files
- Server Management
 - Role Management
 - User Management
 - Add/ delete/ modify users
 - Assign user access rights
 - Storage Management
 - Group Organization
 - Customize Alarm Plan Management
 - Geo-fence – Add/ Modify/ Delete
- Device Management
 - Configure BWC parameters (Advanced Users)

WATCHDOG PRO DEMS

When is DEMS required?

The WatchDog Pro Viewer allows the PC user to record and save the footage locally to the PC while streaming at the time.

If the officer records on the BWC which stores the footage on the SD card, how is this footage downloaded and managed once the camera is returned to the office? This is when the WatchDog Pro DEMS is required.

WatchDog Pro DEMS is an optional desktop software which is used for the downloading, and video management of footage which has been recorded and stored on the BWC SD card.

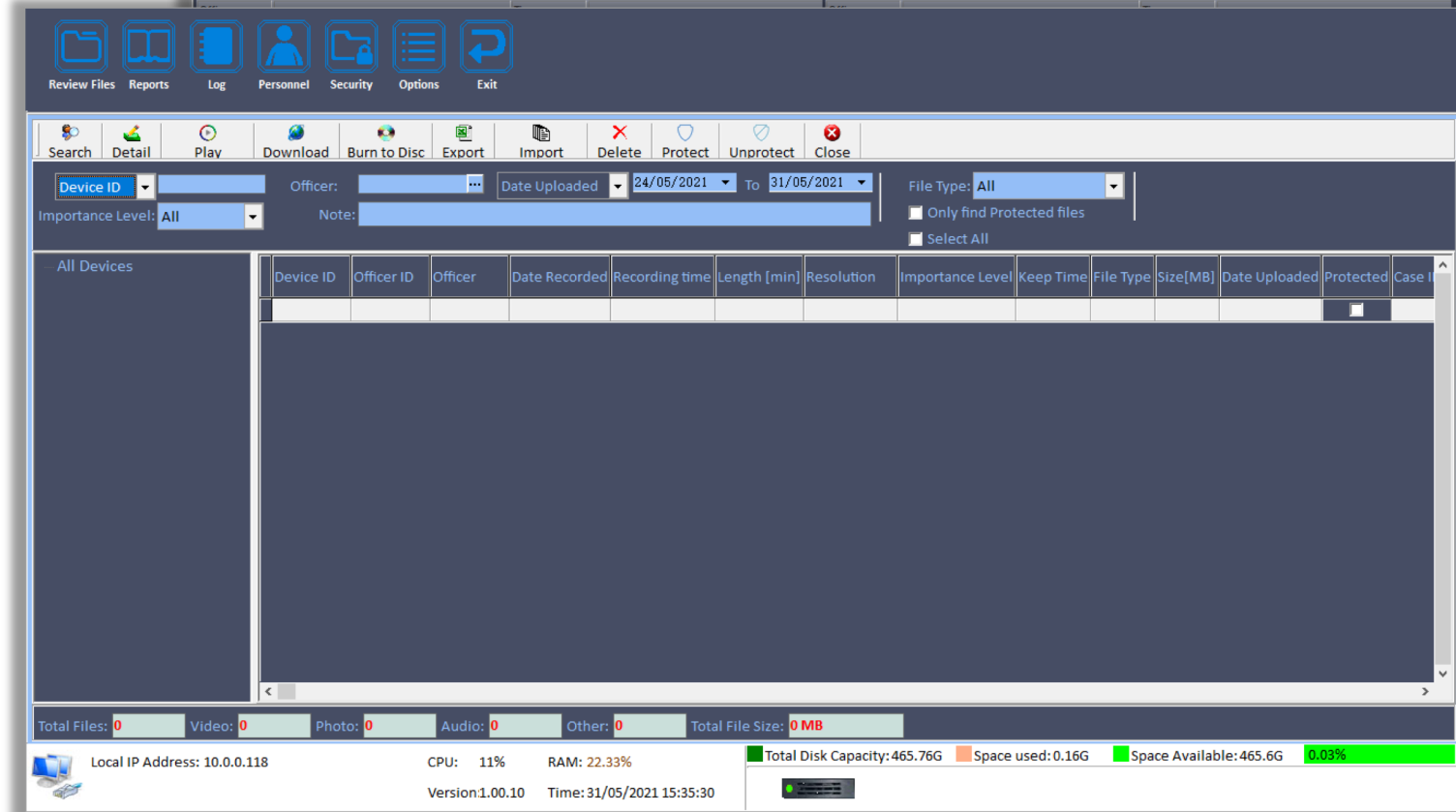
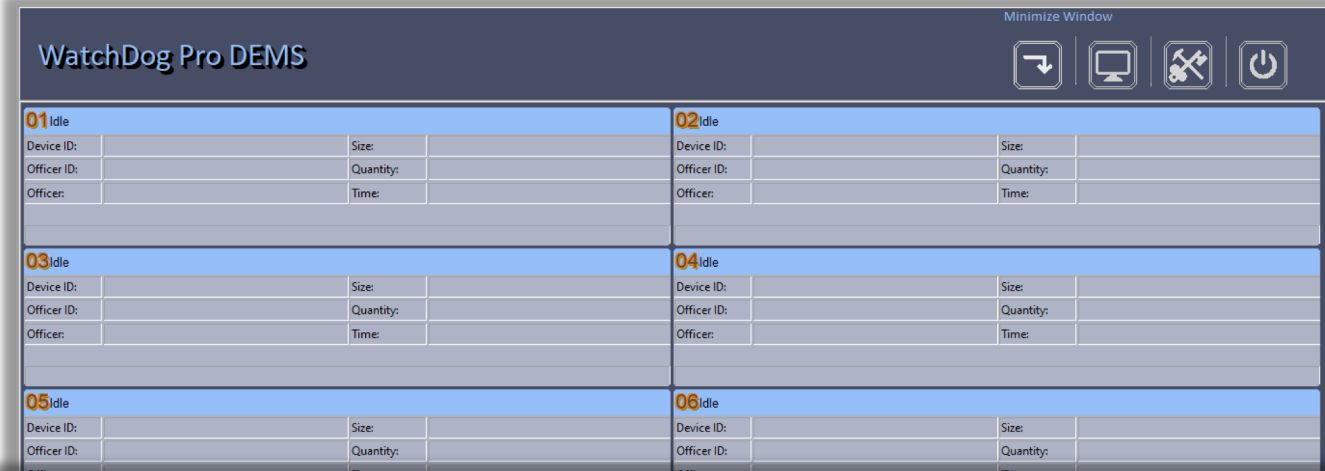
DEMS automates the download process by allowing single or multi-camera connections which downloads and deletes footage from the SD card, then charges the camera at the same time.

For applications where a small number of BWC's are used, the user can connect the BWC via the PC's USB port(s) to download the video footage via DEMS.

For larger BWC applications where multi-camera simultaneous downloads are important for daily operations, the WatchDog Pro 10 Port Docking Station is recommended.

DEMS Features:

- Compatible with optional 10 port Docking Station
- Download, delete and charging of BWC via optional Docking Station
- Audio/ video search, play, export, delete
- File review and replay
- File marking – Mark files as Important which prevents deletion
- Reports
- User management and logs
- Custom file category configuration for auto deletion or retention based on time configuration



What's required when quoting?

Live Streaming Solution

- ☞ WatchDog Pro (64GB) Body Worn Camera (Body Harness included)
- ☞ WatchDog Pro Client/ Server Software (1 – 50 devices)
- ☞ Installation of Client/ Server Software

Optional

- ☞ Desktop Charger (single dock)
- ☞ WatchDog Pro Client/ Server Software (50+ devices) – for applications requiring more than 50 cameras connected to a single Platform Server installation instance.

Video Management

The WatchDog Client software which is part of the Live Streaming Solution has limited video management ability and if advanced video management is required, you need the following:

- ☞ WatchDog Pro DEMS
 - ☞ WatchDog Pro 10 Bay Docking Station – multi-camera download, delete and charge via DEMS
- Kindly note that the DEMS works independently from the live streaming software and is used for video management only.

To create the live streaming ability, a Platform Server installation instance is mandatory. The supply of the server hardware hardware, and costs thereof for maintenance and security, is the responsibility of the customer . This allows the customer to take full control of their data, storage and it's security.

There are 2 options available to host the Platform Server software

1. Cloud Based server. The Platform Server will be installed on the Cloud Server and all communication parameters will be configured by Doculam to allow live streaming between the WatchDog Pro BWC and Client software.
2. Local Server. The customer has the option to provide and use a local server on their LAN/ WAN. Specs of this server will be provided and is dependent on the number of BWC connected to the Platform Server.

NB: Doculam does not provide any Cloud/ Local server for the installation of the Platform Server software. This is solely the responsibility of the customer.

