



doculam

IDENTIFICATION, SECURITY, SAFETY SOLUTIONS & EVENTS

Pioneering **SMART**TM Business Operations



SECURITY



VERSATILITY



IMAGE QUALITY



RELIABILITY



INNOVATION

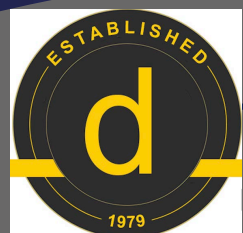
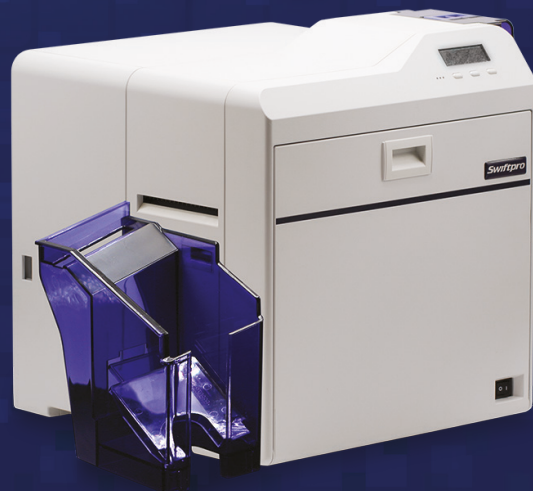


DURABILITY

Swiftpro® K-Series

Retransfer Card Printers and Laminators

The Swiftpro K-Series of retransfer card printers delivering outstanding print quality with 300dpi printing density and optional 600dpi, coupled with inline lamination for single and dual sided laminates for durability and security. This makes it an ideal solution for businesses requiring high-quality smart cards with logical and physical access management and a multitude of other vertical market applications.



Swiftpro® K-Series

Retransfer Card Printers

This reliable and durable printer is ideal for both entry level and more advanced secure card programs for a range of vertical markets.

Six building blocks for your card program



SECURITY



VERSATILITY



IMAGE QUALITY



RELIABILITY



INNOVATION



DURABILITY



Reliability

- ✓ Swiftpro K-Series are well respected globally for their Japanese engineering for quality and reliability
- ✓ Ease of use, operations and maintenance with minimal downtime provides customer with efficient solutions for their card programs
- ✓ Print on demand or print farm application
- ✓ Hundreds and thousands of units installed globally within a multitude of vertical markets



Security

- ✓ The ribbon erase function prevents leakage of personal information on the ink ribbon. It scrambles information beyond recognition to protect this data
- ✓ Solenoid locks for hopper and supplies prevents theft
- ✓ For network security, the printer supports IPsec (IPv6 / IPv4). Encryption protects personal information on a network



Versatility

- ✓ Swiftpro's modular design permits customers to upgrade as their card programs need changes
- ✓ Upgrade availability from simplex printing to duplex printing, add encoding options, bend remedy, single or dual sided lamination and are field upgradable, with KIS Global Service Training Programme for our Premiere Channel Partners
- ✓ Minimal training is required because of its simple design and intuitive operation



Image Quality

- ✓ High Resolution printing using 300 and 600 dpi printing provides superior print quality for all your card programs
- ✓ Superior print quality for bar codes, fine images and small font printing different technology cards and a multitude of different card substrates makes this an ideal choice



Durability

- ✓ Highly durable printers with industry leading warranties on all our products and lifetime on the print head
- ✓ The K-Series of retransfer printers offers durable solutions for all markets with optional laminators for added durability and security for your card programs from student ID cards to citizen ID cards



Innovation

- ✓ Innovating since the 90's with state of the art retransfer printers, providing safe, secure, and reliable ID card printer solutions to global organizations since 1989
- ✓ Following the launch of the first thermal transfer printer over two decades ago, we have continued to pioneer disruptive technologies such as ribbon erase, debow and electronic locks to establish ourselves as market leaders in the retransfer printing market

Inline Laminators

Inline Laminators provide enhanced security and durability and longer card lifecycle. The unit is the ideal partner for the Swiftpro K-Series printers.



2 Years Durability*

- ✓ UV printing (256 gradations)
- ✓ Higher durability with dual in TM film protection



10 Years Durability*

- ✓ L10D lamination module
- ✓ Dual sided lamination in one pass
- ✓ 1.0mil laminates



Elevated Security Programs

- ✓ L10 or L10D lamination module
- ✓ Holographic custom overlay
- ✓ Range of optical variable devices
- ✓ Laser retrievable images
- ✓ Registered images



5 Years Durability*

- ✓ L10 lamination module
- ✓ Single sided lamination
- ✓ 1.0mil laminates

Explore the Layers of Security

Level 1: Overt

- ✓ Two dimensional holographic design
- ✓ Kinetic effects
- ✓ Micro Text – Ranging from .010 inches in letter height to .008 inches in letter height
- ✓ Intentional error in micro text

Level 2: Covert

- ✓ Two dimensional holographic design
- ✓ Kinetic effects
- ✓ Micro Text – Ranging from .010 inches in letter height to .008 inches in letter height
- ✓ Intentional error in micro text
- ✓ Guilloche fine line features
- ✓ Two Channel (Flip) Image (Available in 90 degree viewable also)
- ✓ Black / White color shift
- ✓ 2D/ 3D

Level 3: Forensic

- ✓ Two dimensional holographic design
- ✓ Kinetic effects
- ✓ Micro Text – Ranging from .010 inches in letter height to .008 inches in letter height
- ✓ Intentional error in micro text
- ✓ Guilloche fine line features
- ✓ Two Channel (Flip) Image (Available in 90 degree viewable also)
- ✓ Black / White color shift
- ✓ 2D/ 3D
- ✓ Latent image (Ghost image)
- ✓ Laser retrievable covert text (CLR)
- ✓ 3D Chrome effect
- ✓ 90°viewable outline
- ✓ Pseudo color
- ✓ Morphing effect
- ✓ Nano text – Ranging from .006 inches in letter height to .001 inches in letter height
- ✓ Lens effects
- ✓ Nano Image – up to 20,000 DPI with a minimum size of .002"

Forensic Sheet

2D/3D

The blue hexagonal pattern in the background will be imaged on a 2nd plane giving the design a 3D depth.



Two Channel Flip
These globes will visibly alternate.

Guilloche Fine Lines

This guilloche design will have kinetic movement.

Lens Effect

A creation of multiple focused real and virtual magnified images of the illuminating light source. The circular image rotates and moves as the observer moves, creating a dynamic visual effect.

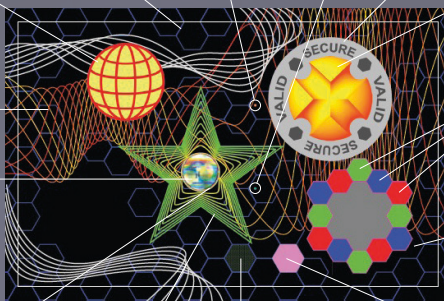


Micro Text
AUTHENTIC around the Lens Effect will have a character height of .008". The bottom word will have an intentional error: the E will be facing the wrong way.

Morph Effect
The star morphs into a circle through kinetic movement.

90° Viewable Micro Image

This globe will diffract when the entire image is turned in a portrait orientation.



Black/White Switch Image

This SECURE/VALID border will have a matted look that gives it a positive & negative diffraction effect.

Chrome Effect

This graphic element will look embossed.

Pseudo Color

These hexagonal elements will diffract in red, green, & blue when viewed at the optimum angle.

90° Viewable

The magenta hexagonal outline will diffract when the entire image is turned in a portrait orientation.

Laser Retrievable Covert Text

The letters "OK" will be hidden within this hexagonal shape and can only be viewed with a laser device in the right reading orientation.

* Up to 2, 5 or 10 years depending on card usage and application.

Swiftpro® K-Series

Retransfer Card Printers and Laminators



K-Series Retransfer Card Printers

Features	K30	K30 Duplex	K60 Duplex
Retransfer Full Colour 256 gradations - Dye-Sublimation	✓	✓	✓
300 DPI Printing	✓	✓	-
600 DPI Printing	-	-	✓
Simplex (Single-Sided Printing)	✓	✓	✓
Duplex (Dual-Sided Printing)	-	✓	✓
Single-Hopper Input 100 Cards	✓	✓	✓
Output Hopper 100 Cards	✓	✓	✓
Upgradable Input Hopper 250 Cards	✓	✓	✓
Magnetic Stripe Encoding	-	✓	✓
Smart Card Contact/Contactless Encoding	✓	✓	✓
Color Supplies	✓	✓	✓
InTM Film	✓	✓	✓
Electronic Locks and Kensington Lock	✓	✓	✓
Lamination Module Simple	✓	✓	✓
Lamination Module Duplex	✓	✓	✓
UV Printing Feature	✓	✓	✓
Ribbon Erase Feature	✓	✓	✓
36 Month Printer Warranty with Lifetime on Printhead	✓	✓	✓
MAC address Forced Printing (UV Ink)	✓	✓	✓

Laminators

Features	L10	L10 Duplex
Compatibility with K-Series Retransfer Card Printers	✓	✓
Color Coded Supply Cartridges and Intuitive Supply Loading for Easy Loading of Lamination Supplies	✓	✓
Durability	Up to 5 Years*	Up to 10 Years*
Plain and Generic Hologram Options Available	✓	✓
Custom Overlays and Laminates for Enhanced Security	✓	✓



www.doculam.co.za

National Contact Number: 087 152 3333
 National Fax: 031 201 9621
 E-Mail: info@doculam.co.za
 Website: www.doculam.co.za
 Head Office: 140 Umbilo Road, Durban, 4001
 P.O. Box 18333, Dalbridge, 4104

Doculam (Pty) Ltd. 2005/028847/07 (Est.1979)
 Vat Reg No. 4150103267 | Export Code: 420764
 Directors: N. Roberts, E. Tranter (Chairman),
 S. Stanley (Managing Director)

